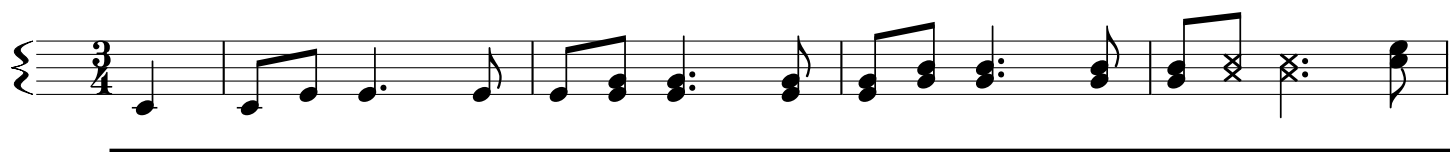


Rosenblätter Walzer

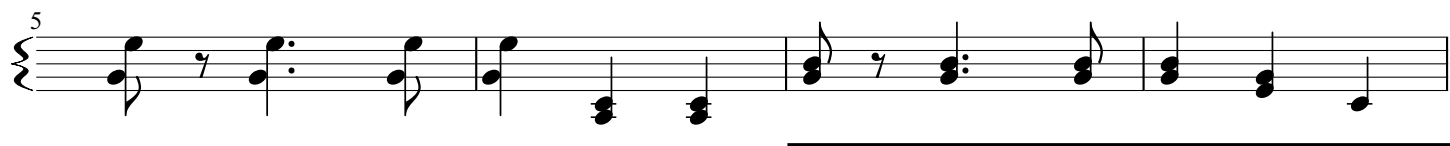
Edler Trio

www.HarmonicaHuys.nl

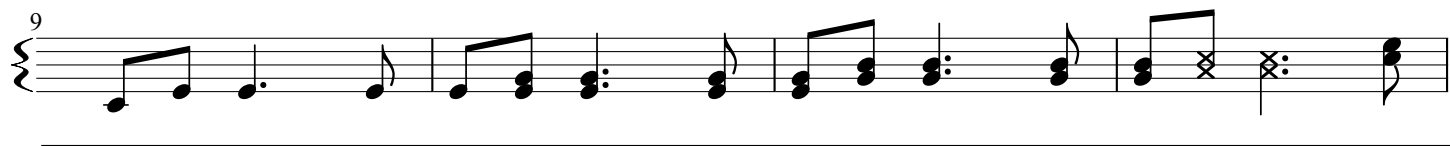
Bearbeitung:
Dieter HJ Holmersma



B b b A b b B b b A b b



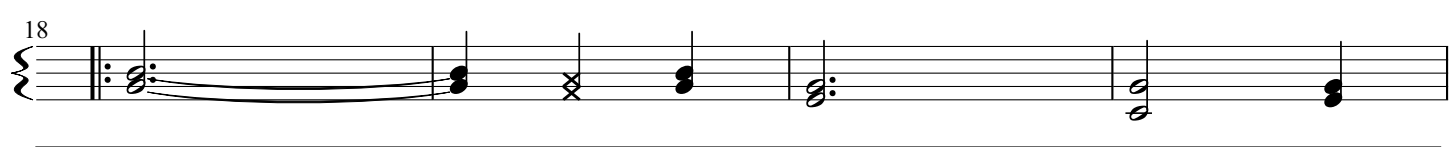
A b b B b b B b b A b b



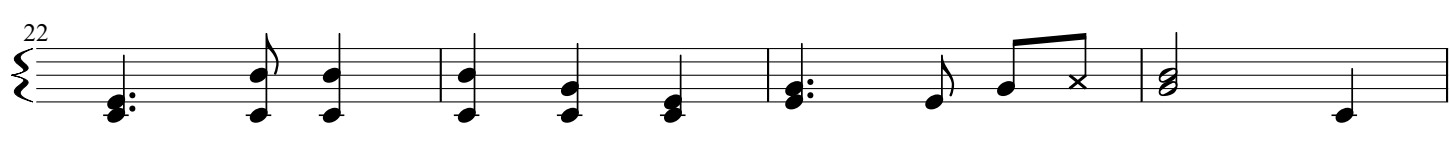
B b b A b b B b b A b b



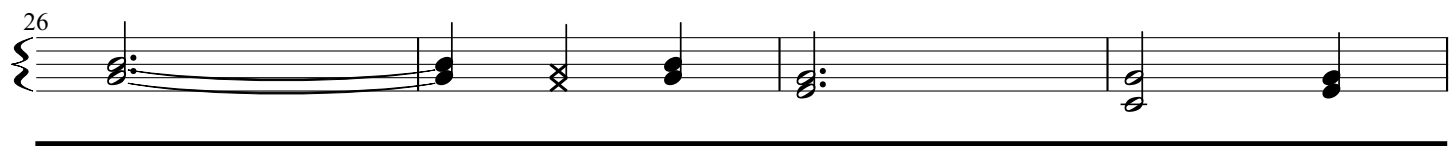
A b b B b b B A B' Bb Bb



B b b A b b B b b A b b



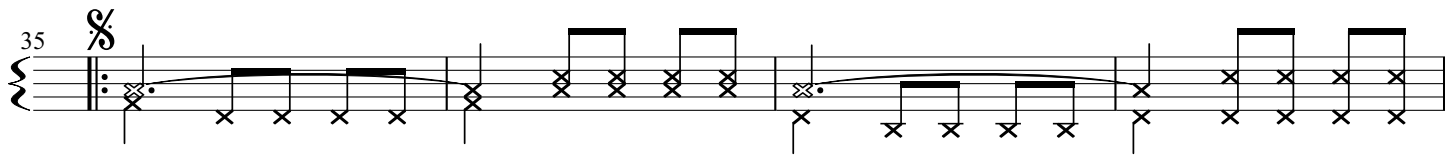
A b b B b b B b b A b b



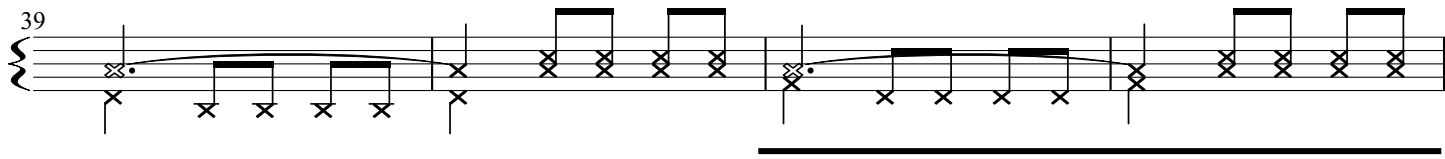
B b b A b b B b b A b b



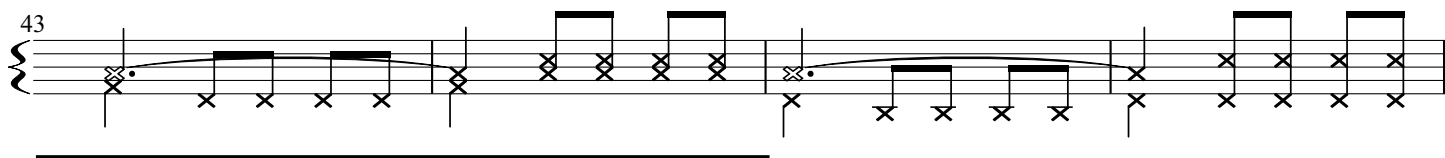
A b b B b b B A B' Bb Bb

35  Musical notation for measures 35-38, featuring a treble clef, a key signature of one sharp (F#), and a 2/4 time signature. The notation includes eighth notes, quarter notes, and rests, with some notes marked with 'x' to indicate fingerings. A thick horizontal line is drawn below the staff.

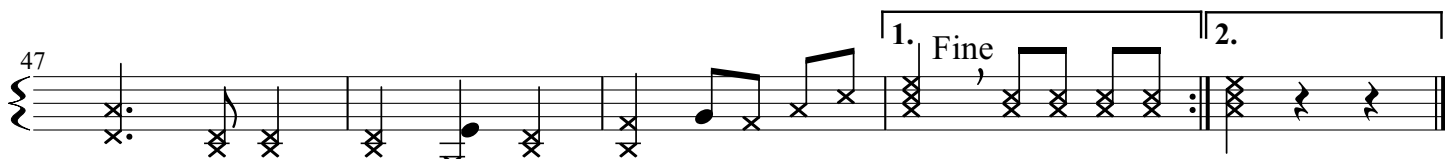
C c c B c c B c c C c c

39  Musical notation for measures 39-42, continuing the piece with similar rhythmic patterns and fingerings. A thick horizontal line is drawn below the staff.

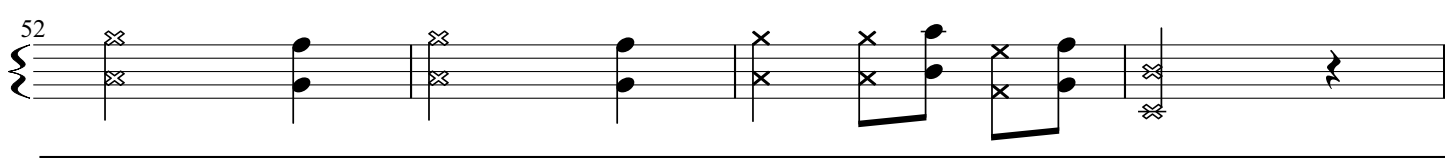
B c c C c c C C' B D' B C'

43  Musical notation for measures 43-46, featuring a treble clef, a key signature of one sharp (F#), and a 2/4 time signature. The notation includes eighth notes, quarter notes, and rests, with some notes marked with 'x' to indicate fingerings. A thick horizontal line is drawn below the staff.

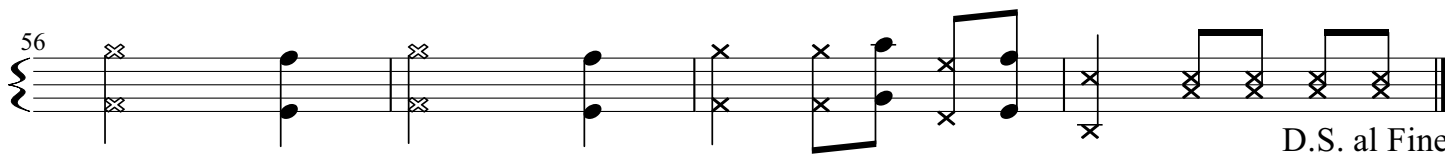
C c c B c c B c c C c c

47  Musical notation for measures 47-51, including a first ending bracket labeled "1. Fine" and a second ending bracket labeled "2.". A thick horizontal line is drawn below the staff.

B c c C c c C B C' Cc Cc

52  Musical notation for measures 52-55, featuring a treble clef, a key signature of one sharp (F#), and a 2/4 time signature. The notation includes eighth notes, quarter notes, and rests, with some notes marked with 'x' to indicate fingerings. A thick horizontal line is drawn below the staff.

C' c' c' B' c' c' C' c' c' D'd'

56  Musical notation for measures 56-59, featuring a treble clef, a key signature of one sharp (F#), and a 2/4 time signature. The notation includes eighth notes, quarter notes, and rests, with some notes marked with 'x' to indicate fingerings. A thick horizontal line is drawn below the staff.

B b b A b b B b b Cc

D.S. al Fine